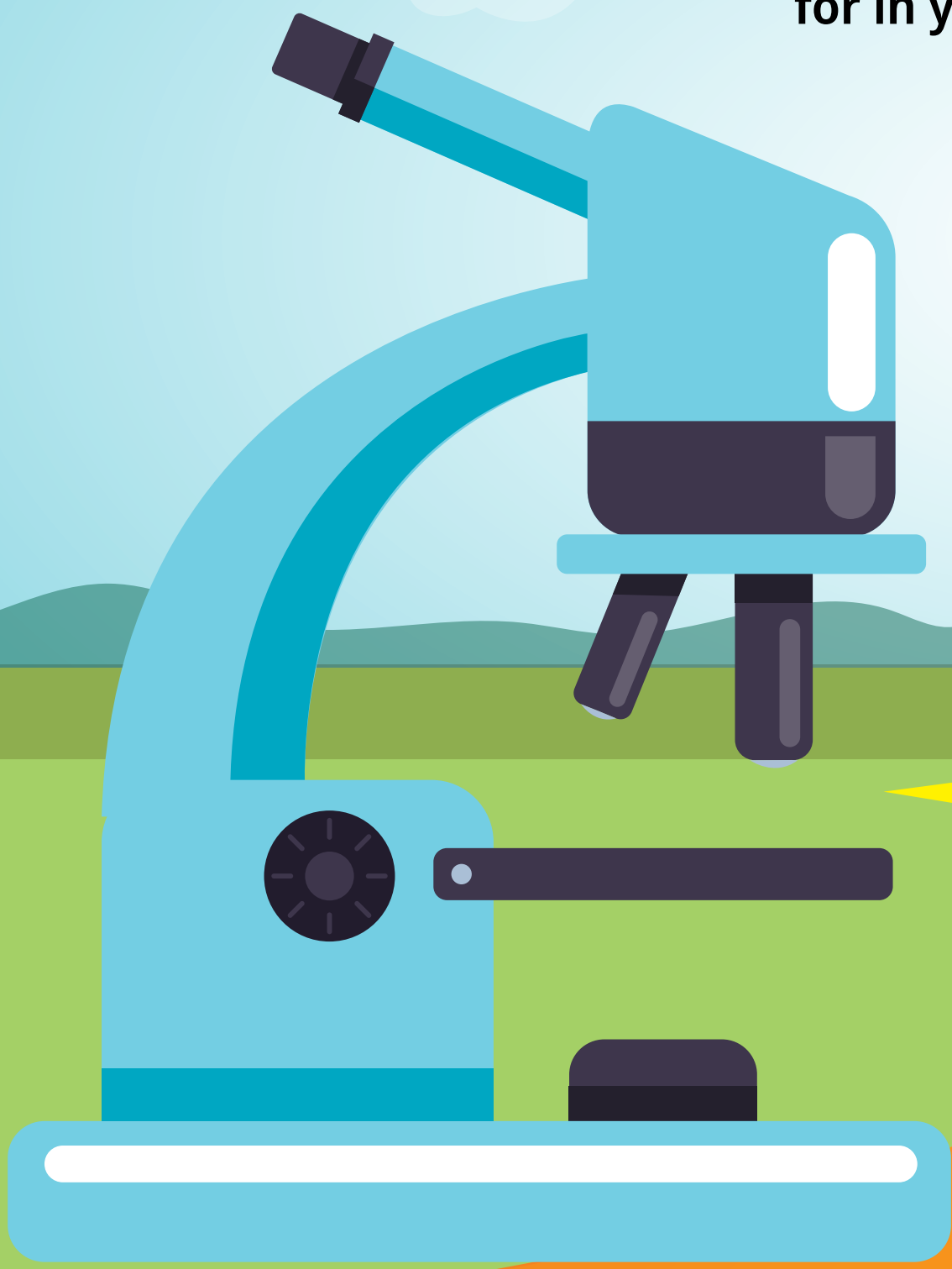


# ToBRFV: IDENTIFICATION GUIDE

ToBRFV (Tomato Brown Rugose Fruit Virus) is a highly transmissible tomato and pepper virus, although it affects tomatoes more drastically. Here's what you need to know and what to look for in your greenhouse or field.



Newly Discovered Tobamovirus



Related to Tobacco Mosaic Virus and Tomato Mosaic Virus



Infects Tomatoes and Peppers



Breaks Tm-2<sup>2</sup> Gene Resistance

## SIGNS TO SPOT

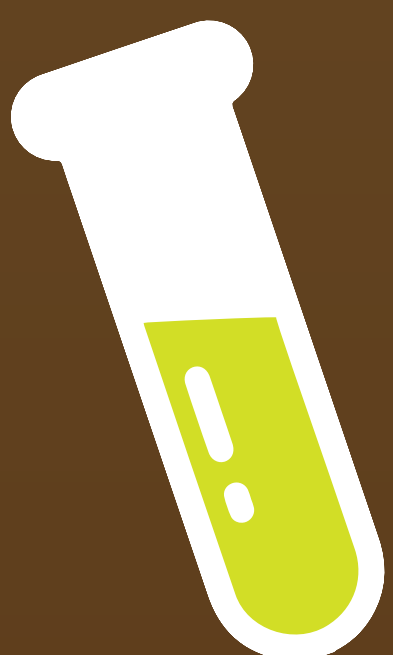
Mosaic Pattern on Leaves

Narrowed Leaves

Necrosis on Pedicle, Calyces or Petioles

Yellow Spots on Fruit

## LIMIT THE SPREAD



Test suspected plants to confirm presence of virus



Quarantine infected plants, as is required in EU and US

Learn more about ToBRFV prevention:

[www.syngentavegetables.com/ToBRFV](http://www.syngentavegetables.com/ToBRFV)

# ToBRFV:

## IDENTIFICATION GUIDE



**Newly Discovered  
Tobamovirus**



**Related to Tobacco  
Mosaic Virus and  
Tomato Mosaic Virus**



**Infects Tomatoes  
and Peppers**



**Breaks Tm-2<sup>2</sup>  
Gene Resistance**

